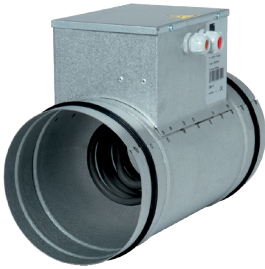


InspirAIR® pre-heating coil

## A11023487

Duct-mounted heating coil– 0.3 kW



### Product description

This Bus BCA model is an electric coil used to post-heat incoming air after it exits the InspirAIR® Top HRV unit. This top-up air heating solution heats air before it is diffused into living rooms, to ensure occupant comfort. This accessory is controlled by the InspirAIR® Top unit.

### Fields of application

Multi-occupancy residential housing, Individual residential housing, New, Refurbishment

### Installation

- installed as a basic ducting accessory, for indoor use only,
- the BUS BCA heater can be installed horizontally or vertically,
- the “box at bottom” position is not permitted,
- the duct upstream of the BUS BCA must feature at least 50 cm of non-flammable material to protect the resistor against flammable material.
- we strongly recommend the use of a metallic duct between the BUS BCA and the HRV unit, such as: Alflex M1 or M0, rigid galva ducting, etc.

### Main characteristics

- galvanised steel ring with seals,
- tube resistor connected to an external terminal box,
- stainless steel pin AISI 321L,
- IP40 box.

### Dimensional data

A (mm)	300
B (mm)	75
Ø (mm)	160
Weight (kg)	2,5

### Electrical datas

Maximum power (W)	300
Power supply	Single-phase
Power (kW)	0,3