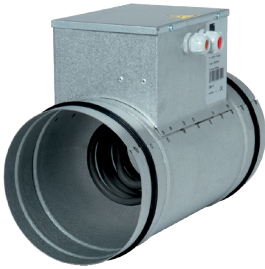


Core terminal

A11023225

VEX40T internal preheating coil*



Product description

This Bus BCA model is an electric coil used to pre-heat incoming air before it arrives at the InspirAIR® HRV unit. It prevents the exchanger against frost in winter. Ventilation can operate with an outdoor temperature as low as -20°C. This accessory is controlled by the InspirAIR® HRV unit.

Fields of application

Multi-occupancy residential housing, Individual residential housing, New, Refurbishment

Installation

- installed as a basic ducting accessory, for indoor use only,
- the BUS BCA heater can be installed horizontally or vertically,
- the "box at bottom" position is not permitted,
- the duct upstream of the BUS BCA must feature at least 50 cm of non-flammable material to protect the resistor against flammable material,
- we strongly recommend the use of a metallic duct between the BUS BCA and the HRV unit, such as Alflex M1 or M0, rigid galva ducting, etc.

Reference arguments

Application:

- Accessory for exhaust and heat recovery ventilation system in individual house or multi-occupancy residence
- New builds or refurbishment

Description:

- Pre-heat coil power 1.5 kW
- Wire-controlled by Aldes heat recovery CMEV via Ibus protocol
- Compatible with the following Aldes heat recovery and air purification solutions: DEEFLY CUBE, DEEFLY MODULO, InspirAIR® Home SC
- For installation upstream of the CMEV heat exchanger to prevent frost and ensure pre-heating of supply air in winter

Main characteristics

- galvanised steel ring with seals,
- tube resistor connected to an external terminal box,
- stainless steel pin AISI 321L,
- IP40 box.

Dimensional data

A (mm)	300
B (mm)	75
L (mm)	300
Ø (mm)	160
Weight (kg)	2,5

Core terminal

A11023225

VEX40T internal preheating coil*

Electrical datas

Maximum power (W)	1500
Power supply	Single-phase
Power (kW)	1,5